

# Fishfinder 340C Quick Reference



## Power On/Off



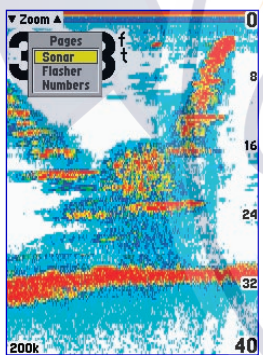
To turn the Fishfinder 340C on or off:  
Press and hold **Power/Backlight** for approximately two seconds.

## Adjusting the Backlight

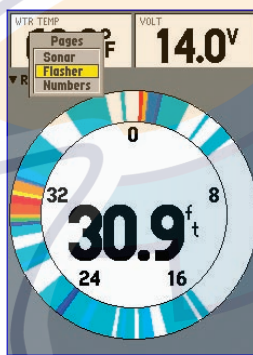


- To adjust the backlight:
1. Press and release **Power/Backlight** to show the backlight adjustment slider.
  2. Press and release **Power/Backlight** repeatedly to cycle through the backlight settings, or use the **Rocker** to change the setting incrementally.
  3. Press **ENTER** to accept the new backlight setting.

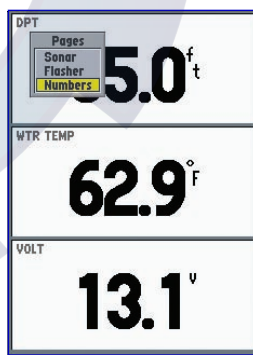
## Main Page Sequence



Sonar Page



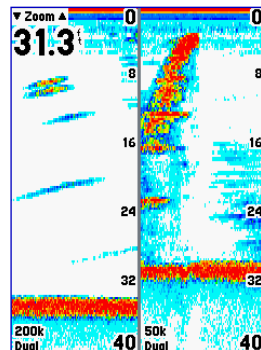
Flasher Page



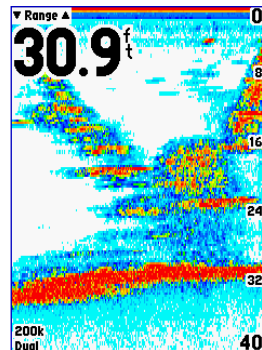
Numbers Page

Press **PAGE** to show the Pages Menu. Press **PAGE** repeatedly to cycle through the main pages.

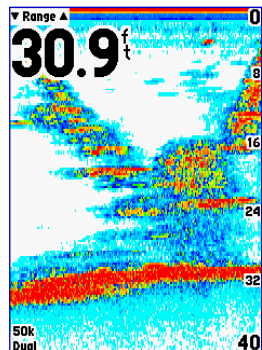
## Dual Frequency Page Sequence



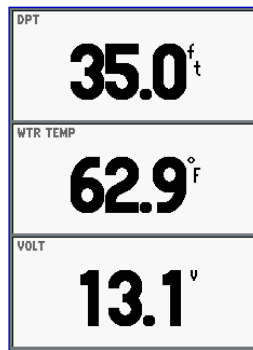
Split Sonar Page













Sonar (200kHz) Page

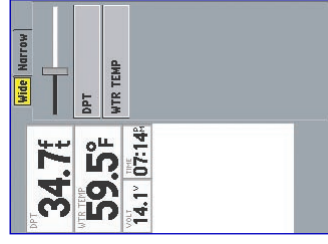
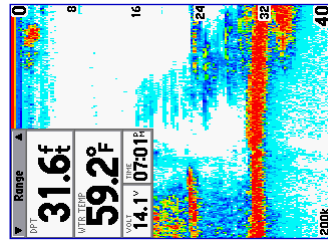
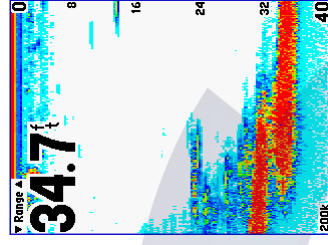


Sonar (50kHz) Page



Numbers Page

	<b>Power/Backlight</b> —press and hold to turn the unit on or off. Press and release to cycle through the backlight settings.
	<b>RANGE</b> —press to display the Range Menu and select a new Range setting.
	<b>PAGE</b> —press to cycle through the main pages.
	<b>QUIT</b> —press to exit a current menu or configuration option, or to cancel data entry.
	<b>ENTER</b> —press to select a highlighted item, initiate data, entry and accept selected values.
	<b>ADJ/MENU</b> —press and release to show the Adjustment Menu. Press and hold to open the Main Menu.
	<b>GAIN</b> —press to show the Gain Menu. Use the <b>Rocker</b> to change the Gain setting.
	<b>PAUSE</b> —press to pause a Sonar Page. Press and hold for two seconds to enter Pointer mode on a Sonar Page.
	<b>DATA/CNFG</b> —press to toggle the data fields in the upper-left of the screen between basic and advanced configurations. Press and hold for two seconds to enter the Advanced Data Setup Menu.
	<b>Rocker</b> —press to highlight a menu option, enter data, change settings, and control the pointer movement.

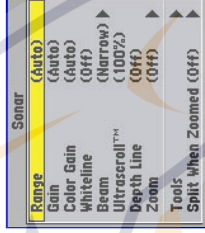


Press **DATA/CNFG** to toggle between basic and advanced configurations. Press and hold **DATA/CNFG** to show the Advanced Data Setup Menu. To change a data field, highlight a field and press **ENTER**.

## Adjustment Menu

From a Sonar Page or the Flasher Page, press and release **ADJ/MENU** to show the Adjustment Menu. The Adjustment Menu contains selections based on the current page.

To change a setting, use the **Rocker** to highlight a selection, and press **ENTER**. Use the **Rocker** to make a change, and then press **ENTER** to accept the change. Adjustment setting changes are retained when the unit is turned off.



## Main Menu

From any page, press and hold **ADJ/MENU** to show the Main Menu. The Main Menu contains unit setup items including settings for the Graph, Sonar, Temp, Alarms, System, Units, and Time.

To view a tab, use the **Rocker** to highlight the tab. To change a setting, use the **Rocker** to highlight a field and press **ENTER**. Use the **Rocker** to make a selection, and press **ENTER** to accept the change. Changes made in the Main Menu are kept in memory and do not change when the unit is turned off.

